



Open Day 2021

Enrol now to secure your place for 2022

Enrolment Management Plan in place

Enrolment Interview Dates:

- Wednesday 2 June 3pm - 6:30pm
- Wednesday 11 August 3pm - 6:30pm
- Wednesday 8 September 3pm - 6:30pm

Interviews will be held in the Library – ensure all required documents are completed for your scheduled interview.

www.facebook.com/PineRiversStateHighSchool


Respect

Pride

Effort

Safety

SPECIAL EVENTS

EVENT	TIME	LOCATION	MAP REFERENCE
Prospective parents forum presented by Principal, Head of Department Junior Secondary and Year level co-ordinators - Year 7	4:45pm & 5:15pm	T Auditorium	T
 IGNITE ACADEMY Prospective students/ parents' information session	5:45 - 6:15pm	T Auditorium	T

ENROLMENT PROCESS

A DET Enrolment Management Plan is in place at Pine Rivers State High School. Unfortunately, enrolments completed **after Term 3 cannot** be guaranteed a place for 2022. All out of catchment applications received after this time will be placed on a waiting list in the order they are received. These applicants will be contacted as places become available.

Today	<ol style="list-style-type: none"> 1. Collect and complete an EXPRESSION OF INTEREST at the Welcome Tent. 2. Present your completed EXPRESSION OF INTEREST to the staff at the Enrolment Tent, book an interview and collect an Enrolment Pack.
After Open Day	<ol style="list-style-type: none"> 1. EXPRESSION OF INTEREST forms will be available at your primary school and online on our website - www.pineriversshs.eq.edu.au 2. Return EXPRESSION OF INTEREST forms to PRSHS or your local primary school. 3. An individual enrolment pack will be forwarded to your primary school with details on how to book an interview.
Enrolment Interviews	<p>Three dates are available for you to complete your enrolment interview:</p> <ul style="list-style-type: none"> • Wednesday 2 June • Wednesday 11 August • Wednesday 8 September <p>Please ensure you have read and understand the policies and procedures outlined within the Enrolment Handbook.</p> <p>All forms must be signed and copies of required documents present for your interview to proceed.</p> <p>Please contact our enrolments officer if you have any questions: ph: 38814700 e: enrolments@pineriversshs.eq.edu.au</p>

CATERING

FOOD	PREPARED BY	LOCATION	MAP REFERENCE
BBQ sausage sizzle and refreshments	PRIMA Committee	Administration car park	Main entrance off Ash Court
Coffee shop including: tea, coffee, milkshakes, slices	Hospitality Students	Cyber Café	D10

PROGRAM PERFORMANCES

TIME	EVENT	VENUE
3:30pm - 6:30pm	<i>Music student performances</i>	J Block Courtyard
4:00pm	Dance Performances	Auditorium

FACULTY AREAS

FACULTY AREA	LOCATION	MAP REF	NATURE OF DISPLAY
The Arts {including Visual and Performing Arts}	J Courtyard & upstairs	J	Static displays on The Arts subjects and extra-curricular activities meet and greet with staff, view facilities, student work displays and mural display.
Design Technology IGNITE STEM	B08	B	STEM (Science, Technology, Engineering, Mathematics) 3D Printers Talk to current IGNITE students about the programs
Health & Physical Education	Sports Hall	P	Static display Meet staff <i>The Amazing Race</i>
Aboriginal and Torres Strait Islander Program	F13	F	Discuss Indigenous Education and Pacific Islander programs

Home Economics	Cyber Café	D	Coffee shop – tea, coffee with light snacks, on sale. All prepared by the Hospitality and Home Economics students.
Humanities IGNITE - HASS	F12	F	Social Science Audio Visual Display, Computers, Books and Student Work, Trivia Quiz Displays of student work and digital design display Talk to current IGNITE students about the programs
Digital Technology	Library	Library	Displays of student work and digital design, including game design and multimedia work
Junior Secondary	Ash Court Entrance	Ash Court Entrance	Transition to high school Meet and greet with YLC's
Languages	U Block	U	Student work displayed Fact sheets Japanese and German traditional games Origami activity Students dressed in traditional Japanese clothing
Learning Connections	Library	L	Meet and greet Discuss different programs that support students with specific learning needs in the junior and senior phases of learning
Maths	G04/G05	G	Puzzles, games and enrichment Activities Carnival games – prizes to be won Integration of technology into Mathematics display Display of outlines and resources for each year level
P&C Association	Hall Foyer	Q	Information booth P&C initiatives including 2020 stationery purchases scheme & uniforms Aquatics club PRIMA Tuckshop
English	U Block	U	Student work displayed Fact sheets Spelling Bee/Quiz (every 30 minutes)
Science	S09	S	Interactive and static displays of Biology, Chemistry, Physics and Earth Science.
Student Engagement HUB	J Block - upstairs	J	Home to the Guidance Officers, School based Police Officer, and specialist support staff. Collect take home resources relating to youth support services. Head of Department and engagement staff available.

OUR CODE

Respect

Pride

Effort

Safety

STATEMENT OF PURPOSE

Staff and students working together towards all proudly achieving their personal best

OUR MOTTO

By Different Ways to Excellence

OUR VISION

Informed citizens building harmonious communities

DEEP LEARNING

We believe Deep Learning occurs when a learner uses acquired knowledge, understanding, insight and thinking skills to solve a range of problems. They work independently or collaboratively, often leveraging digital to create innovative solutions and pose critical questions. Through their development of self-reflection, inquiry and perseverance, successful learners face new challenges with confidence and tenacity.

ACHIEVEMENTS TO NOTE:

Academic

Top 10 in Queensland recognition for Literacy gains for 2018 NAPLAN
'Significantly Above' improvement against 'like' schools in Numeracy
100% of Year 12 students receiving and ATAR or a VET certificate
100% Year 12 2019 completed/completing a SAT or awarded a QCE or VET qualification
100% Year 12, 2020 achieved a QCE or QCIA

OTHER ACHIEVEMENTS

STEM programs

Won 7 categories at 2018 National Finals
Fair Dinkum 4x4 3rd at world championships in Abu Dhabi, December 2017
Wombat Warriors 1st at world championships London, July 2016

Sport

All Schools Touch and BOSTL - Finalists 2020, 2021
Vicky Wilson Cup, Netball – State Finalist 2019
Interschool School Sport Year 7, 8 and 9

Cultural

Musical – *Grease*
Indigenous Dance Troupe

Service and Leadership

Roses Day - Valentine's Day, Student Representative Council
Official leadership positions as Captains and Student Representative Council

SCHOOL CULTURE



PEDAGOGICAL FRAMEWORK

SCHOOL CULTURE



POSITIVE RELATIONSHIPS

Each member of the Pine Rivers State High School community has a role to play in a whole school approach to promote the best possible climate for learning, teaching, individual self-development and self-responsibility.

To ensure positive relationships between all members of the school community and to maximise the effective learning of students, it is important that everyone understands and implements our whole school approach as outlined in our **Responsible Behaviour Plan**.

Our rules and procedures are organised around the **School Code** of:

- **Respect**
- **Pride**
- **Effort**
- **Safety**



TEACHING AND LEARNING PRACTICES

Pine Rivers SHS has a strong focus on developing and assessing **key employability skills** that promote deeper learning for every student through the embedding of the 6 competencies described within the "New Pedagogies for Deeper Learning" project.

1. **Character**
2. **Citizenship**
3. **Collaboration**
4. **Communication**
5. **Creativity**
6. **Critical Thinking**

As a school we value all pathways equally, whether they be through University, Vocational Education, Traineeships/ Apprenticeships or direct entry into the workforce.



FEEDBACK

The partnership between school and home is imperative in maintaining quality student outcomes.

Pine Rivers SHS facilitates a range of **face to face opportunities** between staff, students and teachers that promotes a collaborative approach to student learning.

Our communication strategies ensure open and transparent information exists between home and school. All staff have the opportunity to contribute to our communication mediums. Staff are required to make contact with parents to raise any concerns with their child's progress or to celebrate success.

Excellence in student learning and achievement is celebrated and shared publicly on our weekly assemblies and in our school newsletters.



GROWTH AND DEVELOPMENT

Teachers at Pine Rivers SHS share the fundamental belief that every student can learn.

Through a culture of high expectations and a focus on **Growth Mindset**, we build a culture of success for all students. Students are provided the opportunity, resources and mindset to take control of their own learning and development.

Students participate in a range of **student leadership programs** and opportunities to develop and extend their abilities working and serving others within



COLLEGIALITY

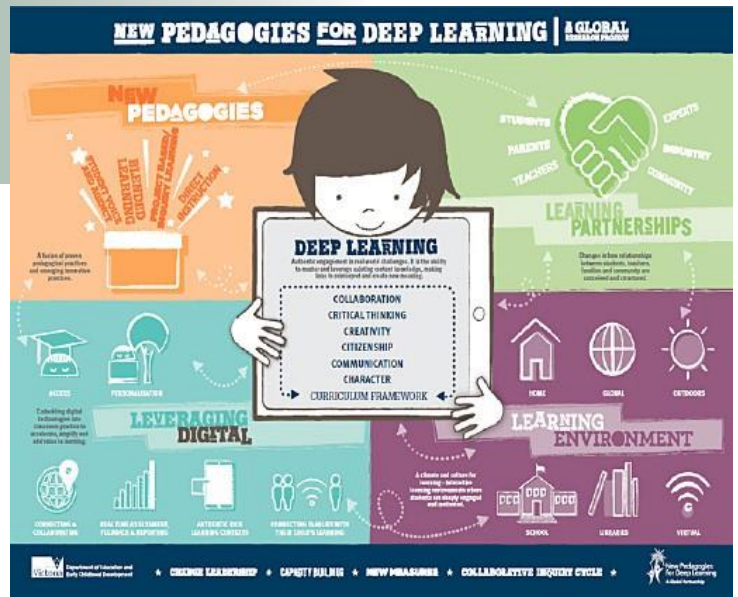
Consistent application of **school policies** and **classroom practices** are imperative in maintaining the good order and management of our school.

Each member of the school community is valued and there are strong levels of trust and support for all members. There is a strong sense of belonging and pride in the school. The school values its network of **community partnerships** in providing real world opportunities for our students.

Parents have opportunities to provide input into our school's decision making processes through on-line surveys, School Council and our P and C.

Students are given a voice in decision making through our student representative council, our school council and senior committees.

NEW PEDAGOGIES FOR DEEPER LEARNING



Through our Deeper Learning program we are explicitly teaching students the skills required to be successful in whatever their post school future may be.

The six competencies, Critical Thinking, Creativity, Communication, Collaboration, Citizenship and Character, underpin this program throughout the week.

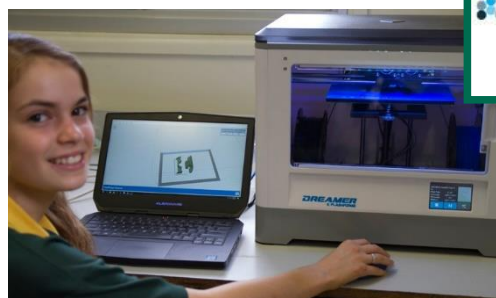
Our continued focus on Deeper Learning is evident in our shared understanding of what this statement means at Pine Rivers:

We believe Deeper Learning occurs when a learner uses acquired knowledge, understanding, insight and thinking skills to solve a range of problems. They work independently or collaboratively, often leveraging digital to create innovative solutions and pose critical questions. Through their development of self-reflection, inquiry and perseverance, successful learners face new challenges with confidence and tenacity.

Our engagement with local community groups and focus on digital technologies supports and improves learning for all students and our motto of 'by different ways to excellence'.

GONSKI 2.0 SUPPORTS DEEP LEARNING

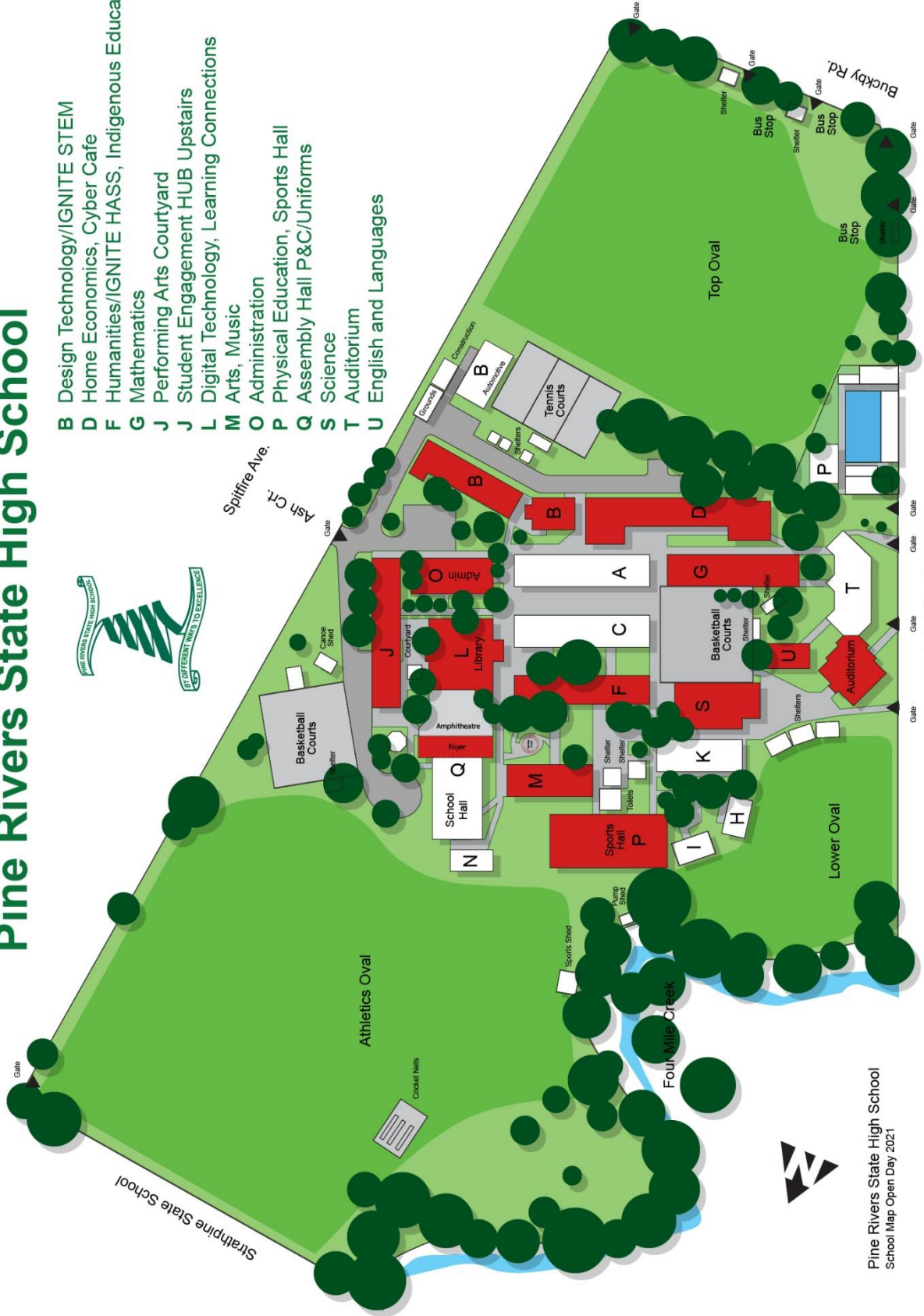
Recommendation 7
Strengthen the development of the general capabilities, and raise their status within curriculum delivery, by using learning progressions to support clear and structured approaches to their teaching, assessment, reporting and integration with learning areas.



Pine Rivers State High School



- B Design Technology/IGNITE STEM
- D Home Economics, Cyber Cafe
- F Humanities/IGNITE HASS, Indigenous Education
- G Mathematics
- J Performing Arts Courtyard
- J Student Engagement HUB Upstairs
- L Digital Technology, Learning Connections
- M Arts, Music
- O Administration
- P Physical Education, Sports Hall
- Q Assembly Hall P&C/Uniforms
- S Science
- T Auditorium
- U English and Languages



Pine Rivers State High School
School Map Open Day 2021